

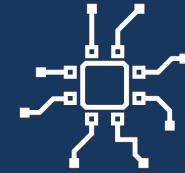
# ARTAMIS

All-Round Telescope Array Monitoring & Information System

14 Telescopes



2 Petaflops  
GPU cluster



Upgrade Field of  
View by factor 25



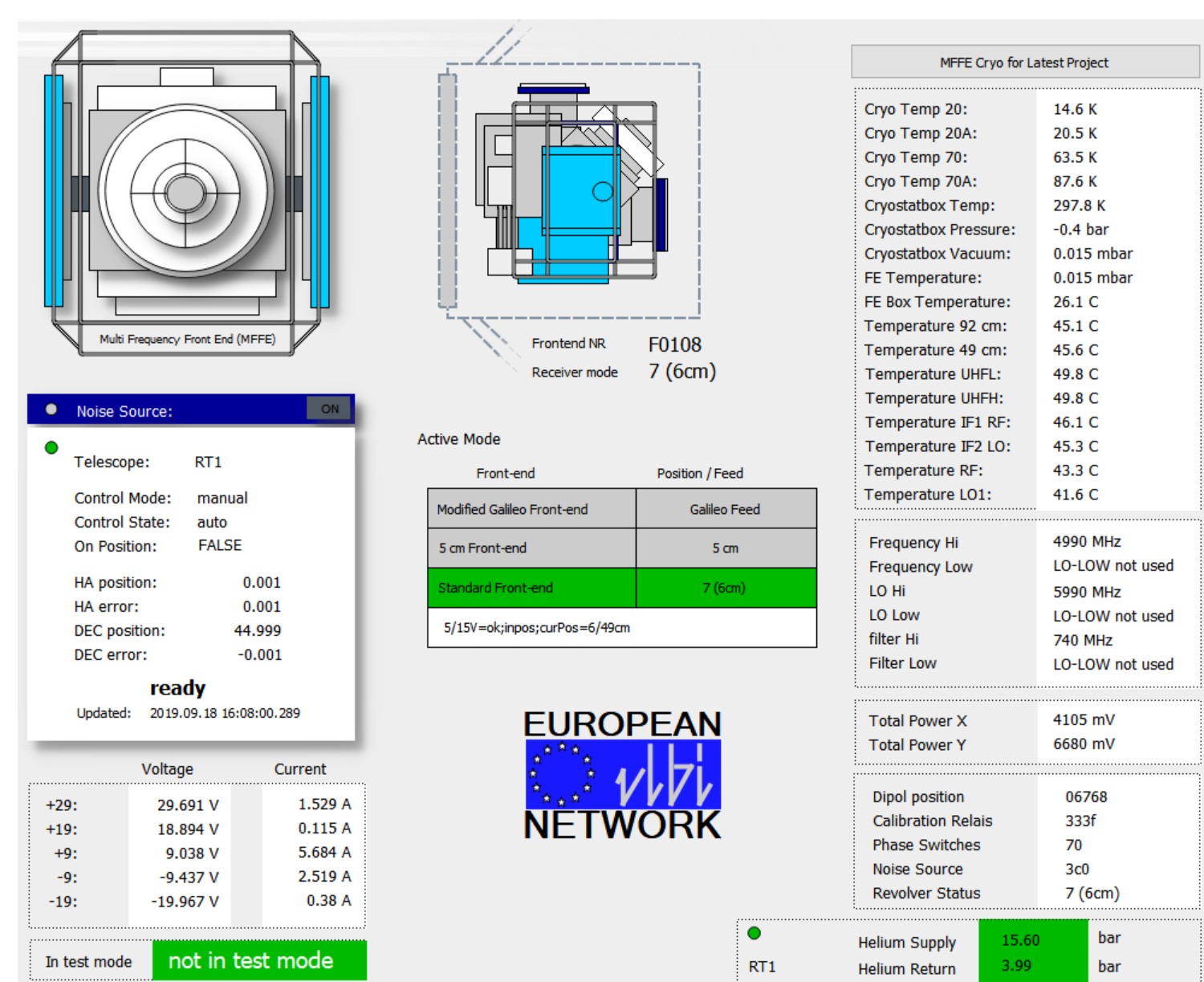
## ARTAMIS

One system to monitor the full telescope array in every aspect from helium supply, firmware, alarms, pointing to observations schedule



- Operators are able to set alarm thresholds
- Mark broken elements, for maintenance team
- Values can be dragged and dropped into graphs. Or placed into a "shopping basket" for later use (scroll function to look back in time)
- Desktop & WebUI for easy access by different users

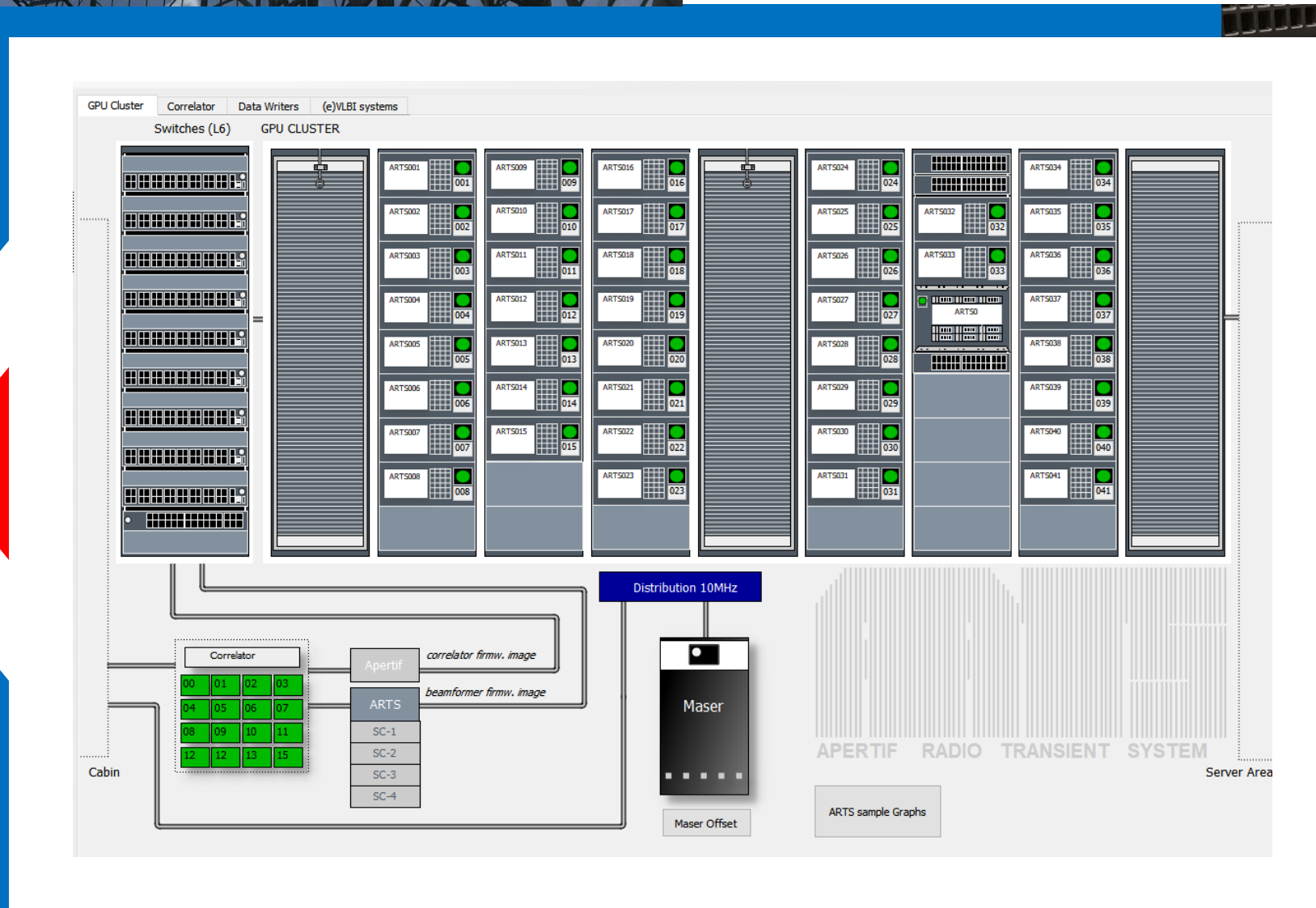
## Detailed overview of both the Multi Frequency Front-end and Phased Array Feed, alarms and data readout



The telescope steering has a full range of custom icons to alert in any possible situation and visually advice the operator on duty

## ARTS

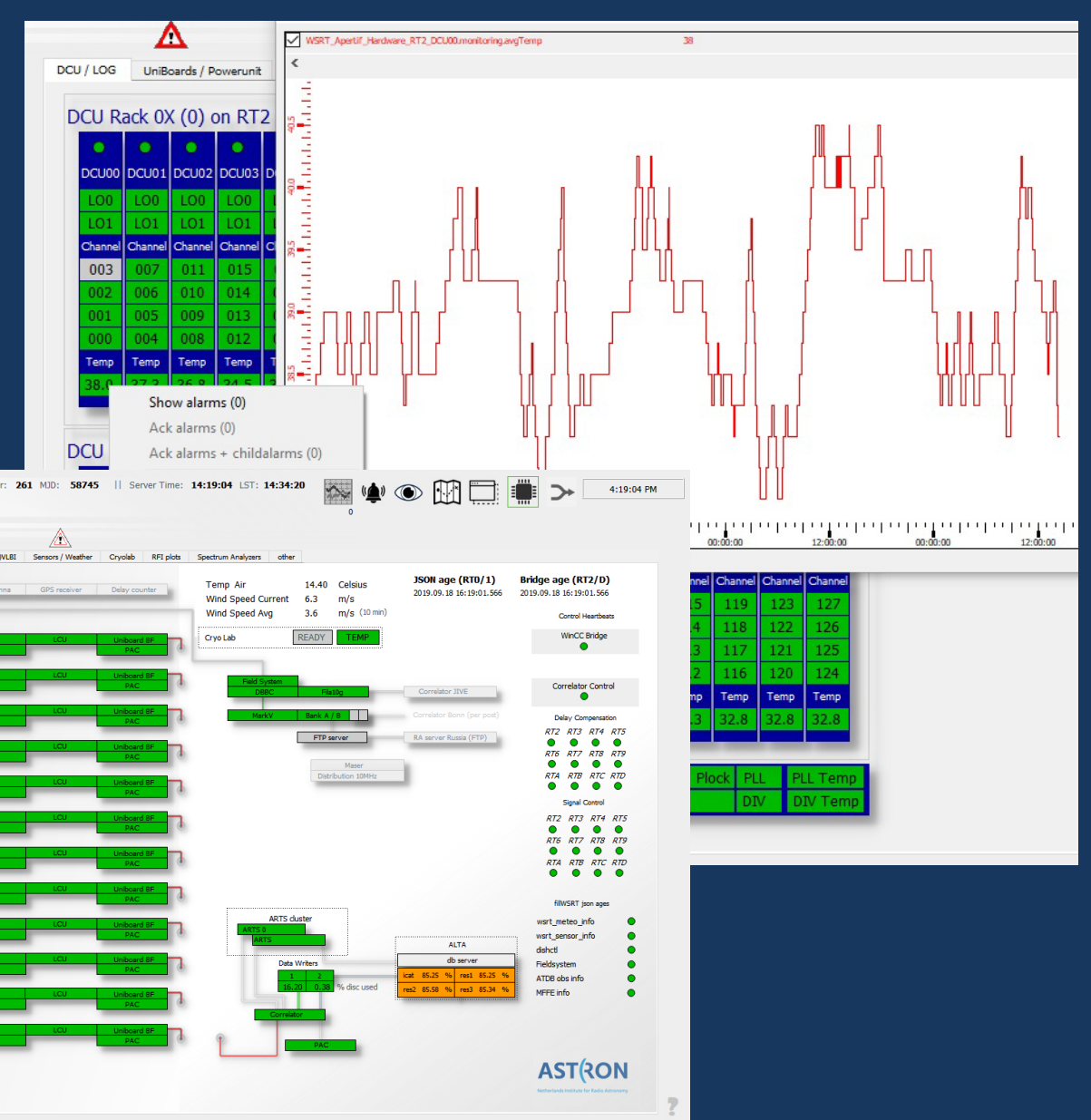
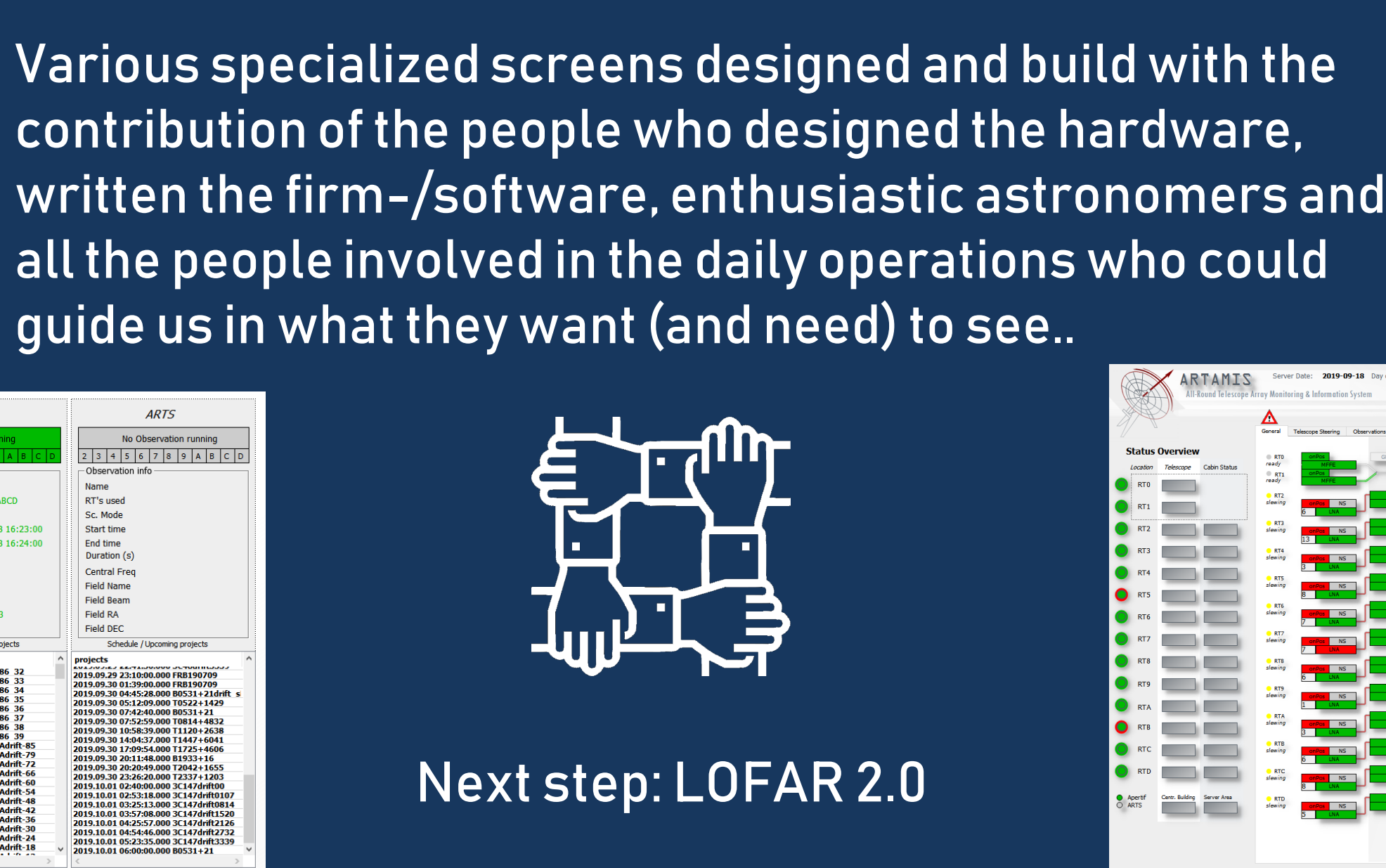
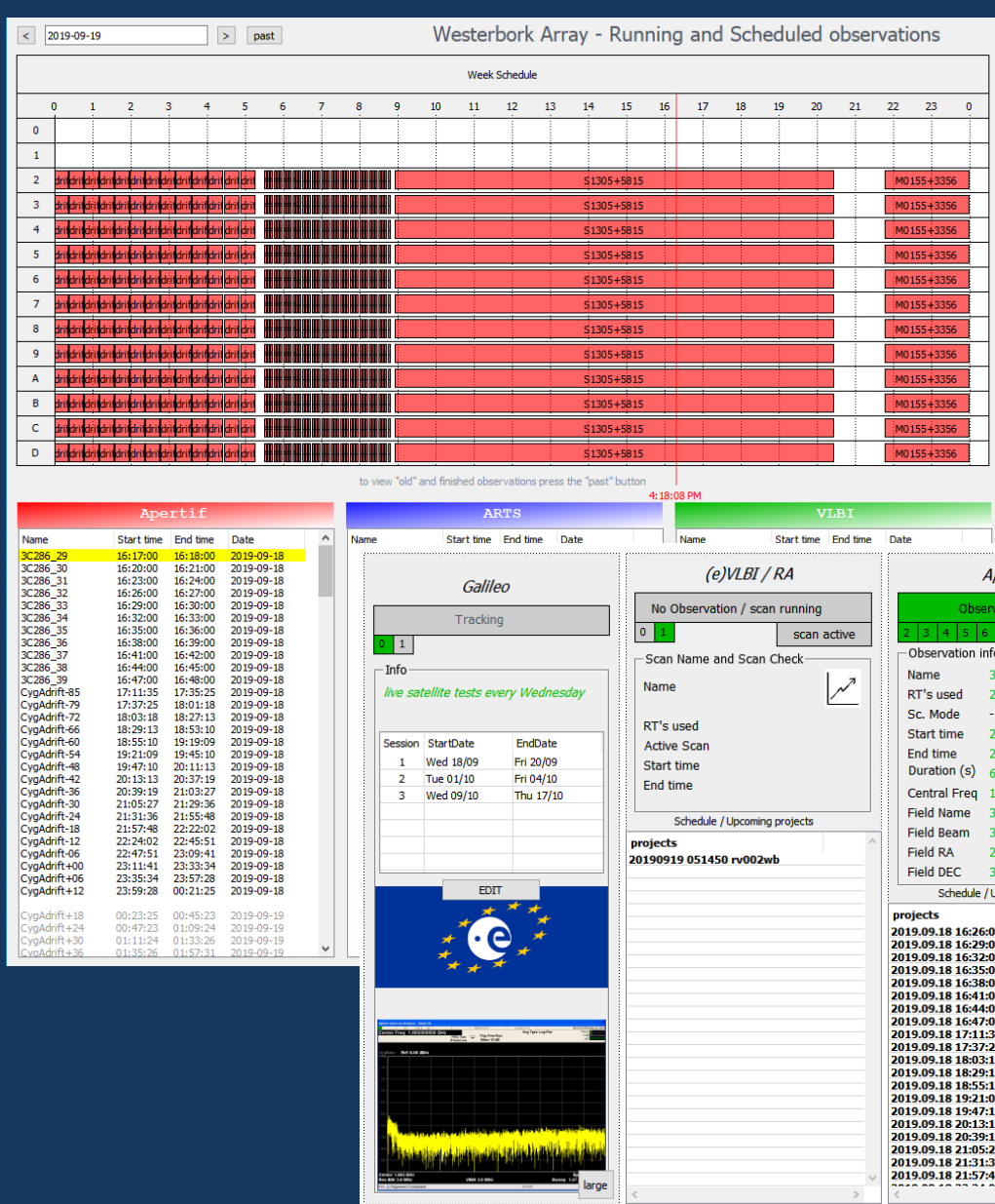
Our supercomputer, which processes 4 terabits of data per second: more than the entire internet of the Netherlands. With a peak compute capacity of 2 petaflops



Various specialized screens designed and build with the contribution of the people who designed the hardware, written the firm-/software, enthusiastic astronomers and all the people involved in the daily operations who could guide us in what they want (and need) to see..



Next step: LOFAR 2.0



SIEMENS  
Ingenuity for life

etm  
Professional Control

NWO

JIVE

RadioAstron  
радиоастрон

EUROPEAN  
NETWORK

ASTRON  
Netherlands Institute for Radio Astronomy

Apertif Long Term Archive  
ALTA

esa  
European Space Agency

APERTIF  
APERTure Tile In Focus

REAL SOLUTIONS BV  
INNOVATIVE IN AUTOMATION

GALILEO

Arthur Coolen < coolen@astron.nl >  
Henk Mulder < hmulder@astron.nl >  
Arno Schoenmakers < schoenmakers@astron.nl >